



INNOVATO HOLDINGS

Innovato Holdings specialise in the development of innovative technology and tools for the dental industry.

Founded by Ioannis Vergoullis ^{DDS, MS} and George Papadopoulos ^{CDT}, the team comprises of dental specialists with over 30 years industry experience and a design and engineer team of the highest level.

The company goal is to innovate and create game changing, essential products for the dental

industry, meeting the unmet needs that the industry withholds.

Products are created from perception right through to production.

Their motto is to “*work with pride and use excellence as a guide*”.

Our Story

VPI EPMS™ is a range of innovative tools that provide the ultimate solution for mastering the emergence profile.

The VPI EPMS™ was developed after experiencing numerous problems in my large and busy referral based implant clinic in Greece. I am sure you have experienced the same frustrations with patients who complain of food impaction and malodor around implant crowns, peri-implantitis associated with cement sepsis, concern of open contact between the implant crowns and the adjacent teeth, the unscrewing of the prosthesis or abutment or loss of emergence profiles from inadequate timing and treatment planning. I knew I could not provide my patients or referring dentists with the highest level of care and the most natural final result if I did not find the answer to this industry wide problem.

After researching and collaborating with other specialists, restorative dentists and dental technicians from around the world, the resounding conclusion to the problems we were experiencing was identified; there was no way to simulate the proper contact size and shape of a natural tooth in a prosthesis with a predictable and duplicable method if the emergence profile around the implant is not equal to the natural tooth. My colleagues agreed with me; the only way to recreate the emergence profile was with meticulous soft tissue sculpting and the additional step of fabricating multiple temporary prostheses that needed to be integrated into

the treatment plan. Unfortunately, most patients are not willing to spend the extra investment for optimal results and some clinicians are not willing to take the time to deliver it. I decided that I would take the time and put forth the effort to be the best surgeon for my patients and serve as an example to help my referring clinicians reach their highest level of excellency. I was committed to providing the most natural emergence profile for every single implant case I was completing and mentor others to achieve the same results.

In 2014, I joined forces with my partner and certified dental technician, George Papadopoulos. Together we designed, tested, developed, patented and brought to life the VPI Emergence Profile Management System™. The VPI EPMS™ is a mold template that my assistant

can use to quickly and easily fabricate a custom shaped healing abutment that replicates the natural root trunk regardless of it's size; small, medium or large. The results were astounding! The patients were pleased with the natural result and my referring physicians were impressed with my ability to deliver a beautiful, gingival emergence profile in every implant case I completed. I was thrilled with the results VPI EPMS™ provided us and, as a result, our practice flourished.

As VPI EPMS™ was being implemented we recognized another opportunity to enhance the system by eliminating the stress of trying to make the right choice in selecting the correct shape and size of the abutment without probes, intraoral measurement or complex mathematical formulas! VPI EP Indicator System™ was born. We now have a multi-use tool that corresponds

with the shapes and sizes in the wells of the VPI EP Mold™ to make the proper selection quick and easy! Another clinical application of the VPI EP Indicator System™ is the evaluation of the available prosthetic space and as a surgical guide for identification of the proper entry site of the implant osteotomy.

In summary, we think you can agree that the VPI EPMS™ for VIP Dentistry is a fast, simple solution to eliminate frustration experienced with implant therapy and potential risks of failure. Our goal is for you to excel with confidence in providing the most ideal and natural tooth replacement therapy to your patients. We are proud to provide you with the VPI Emergence Profile Management System.

Sincerely,

Ioannis Vergoullis DDS, MS
George Papadopoulos CDT

George Papadopoulos CDT
COO Innovato Holdings
CEO MPF Brush Co.
T.A.F.E. School of Dental
Prosthetics
Sydney, NSW Australia

E george@innovatoholdings.com
S [cosdent](https://www.cosdent.com)

Ioannis Vergoullis DDS, MS
CEO Innovato Holdings
Diplomate, American Board
of Periodontology
Diplomate, ICOI
Visiting Assistant Professor
of Periodontics, Louisiana State
University

E ioannis@innovatoholdings.com
S [yiannisvergoullis](https://www.yiannisvergoullis.com)

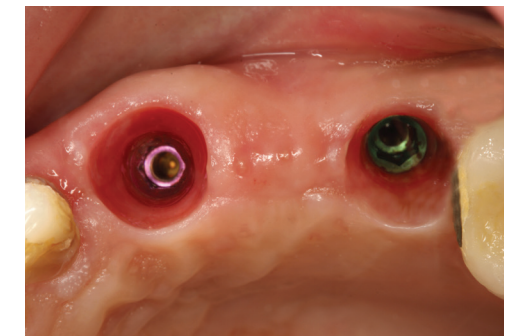
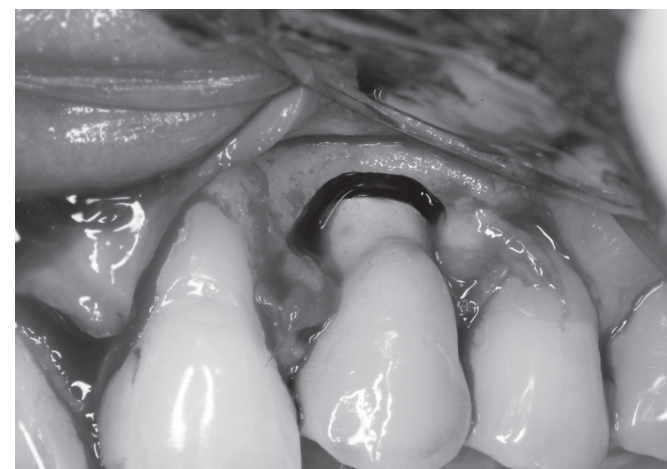
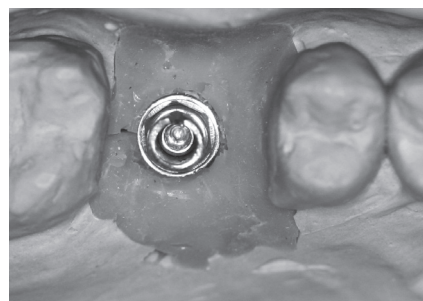


Why VPI?

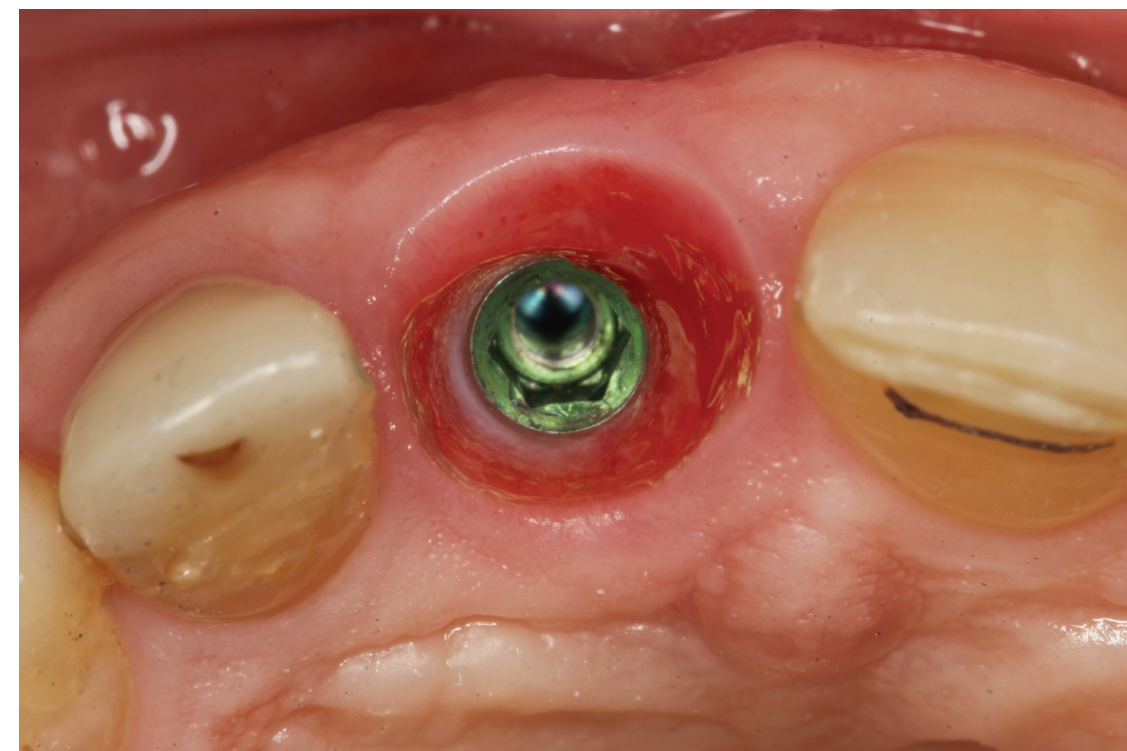
Are you frustrated with the limitations you have today in order to design a proper prosthesis?



Are you concerned of the implications of improper crown emergence profile on the long term biologic response? Food impaction / cement sepsis / peri-implantitis



Are you ready for a change?



Products

VPI EP Management System	10
VPI EP Indicator	12
VPI EP Indicator Guide Pins	18
VPI EP Indicator Retention Handles	19
VPI EP Indicator Tabs	20
VPI EP Mold	22
Mold v.4	28
Mold v.5	30
Mold v.6	32
VPI EP Mold Silicone Inserts	34
VPI Easy Grip Handle	35
VPI EP Additional Tools	36



VPI Emergence Profile Management System

The VPI Emergence Profile Management System is an all inclusive kit containing both the EP Indicator and Mold; all the tools you need to create the optimum natural emergence profile.

The system is currently available in three versions, v.04 compatible with trilobe, v.05 compatible with CrossFit® and v.06 compatible with 45' internal hexagon prosthetic connections.

More versions will be available within 2017, compatible with all widely used implant prosthetic connections.

The VPI EPMS Kit Includes:

- VPI EP Mold
- VPI EP Mold Silicone Insert 1.5mm
- VPI EP Mold Silicone Insert 2 mm
- VPI EP Indicator
- Indicator Guide Pins
- 24 Indicator Tabs
- 5 Abutments
- 5 Impression Posts
- Composite Polishing Paste
- Polishing Mop
- Bristle Brush
- VPI Easy Grip Handle
- Composite Resin Syringe

- 2 Replaceable Nozzles
- Threaded Retention Handle
- Magnetic Retention Handle

Item No.

VPI EPMS v.04
5213006650000

VPI EPMS v.05
5213006650017

VPI EPMS v.06
5213006650024

VPI Emergence Profile Management System



How it Works

The VPI EPMS allows the clinician to identify the optimum emergence profile to be generated and subsequently fabricate the optimum shape and size healing abutment and duplicate impression post for the accurate generation and recording of the selected emergence profile.

Step 1



Evaluate the edentulous space dimensions with the cylindrical tab.

Step 2



Confirm proper emergence profile shape and dimensions with the corresponding anatomical tab.

Step 3



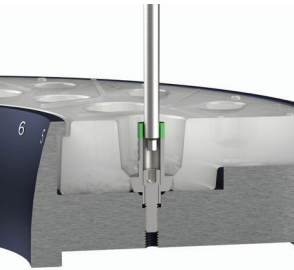
Utilize the cylindrical tab, couple threaded to the handle in order to mark the proper entry site for the osteotomy.

Step 4



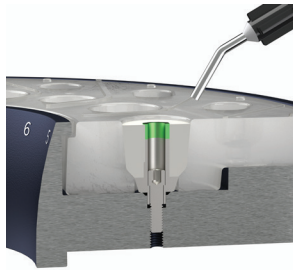
Utilise the VPI EP Indicator pins during the osteotomy preparations to confirm proper osteotomy position and angulation.

Step 5



Couple thread the Ti core abutment in the corresponding well of the mold applying hand torque only.

Step 6



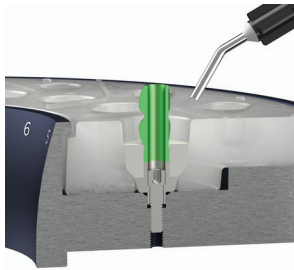
Fill in the open space with VPI composite material and light cure for 40 sec. Following, remove the custom healing abutment from the mold and light cure for additional 20 sec.

Step 7



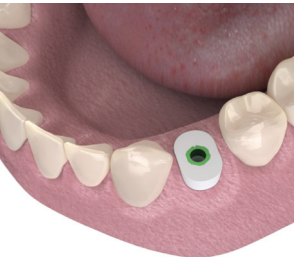
Couple thread the custom healing abutment to the easy grip polishing handle and polish the composite surface with polishing paste and the brushes provided.

Step 8



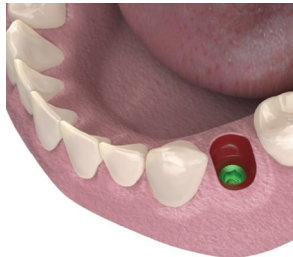
Follow the same steps as per steps 5, 6, 7 for the fabrication of the duplicate custom impression post.

Step 9



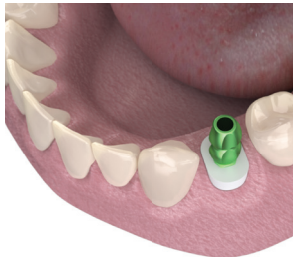
Couple the custom healing abutment with the implant at time of implant placement or at uncover. Allow sufficient healing time.

Step 10



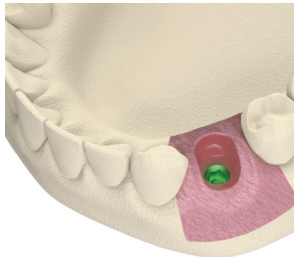
Uncouple the healing abutment and reveal the generated natural emergence profile.

Step 11



Couple thread the custom impression post with the same orientation and following, take an implant impression.

Step 12



Generated emergence profile accurately transferred to the working cast.



VPI Emergence Profile Indicator



The VPI EP Indicator is a multi-use tool that can be used for an easy and fast intra-oral identification of the proper size and shape custom healing abutment that is needed for the patient.

This tool can also be used for the marking or initiation of the implant osteotomy.

- The tools of the VPI EP Indicator system are:
- VPI EP Indicator Base
 - Indicator Guide Pins
 - 24 Indicator Tabs
 - Threaded Retention Handle
 - Magnetic Retention Handle

Item No.
5213006650475

VPI Emergence Profile Indicator

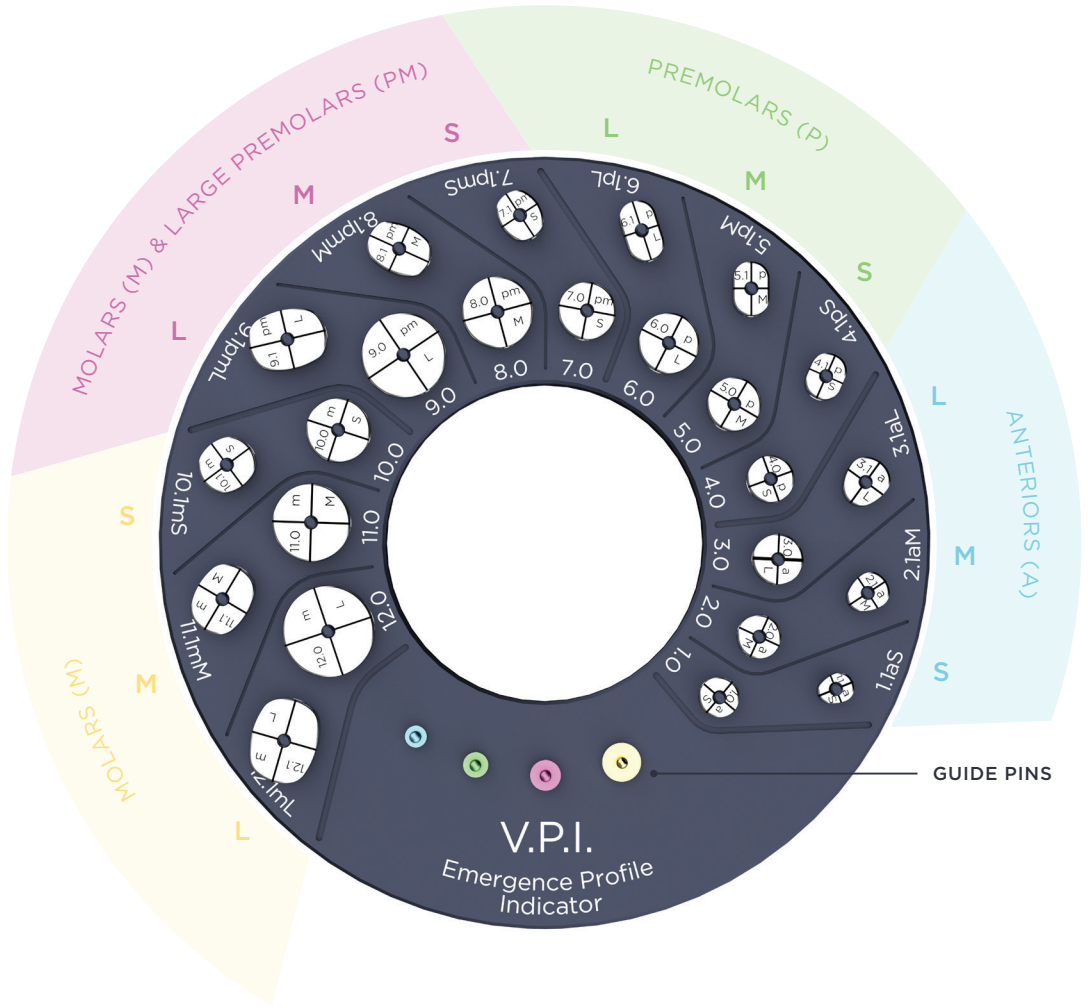
How it Works

By simply evaluating the prosthetic space with the tab connected to the handle the clinician can identify, and therefore correlate, which size and shape abutment needs to be prepared in the EP Mold well eg. 4.1 EPI 4.1 EP Mold.

This tool can also be used as a surgical guide for the proper positioning of the implant osteotomy.

Each anatomically shaped tab can be oriented in the mouth in two ways; Buccal-Lingual or Mesio-Distally.

Orientation T lines of the anatomical tabs, serve as reference for correct orientation of the prosthetic connection of the implant that will allow proper orientation of the anatomical healing abutment once coupled with the implant.



Outside Row

Anatomical shaped tabs (12) that correspond in shape and dimensions with the anatomical shaped wells of the VPI EP Mold, with a coding number that ranges from 1.1 to 12.1.

The 1.1, 2.1 and 3.1 tabs correspond to root trunk shapes of **anterior teeth** (S/M/L).

The 4.1, 5.1 and 6.1 tabs correspond to root trunk shapes of **premolars** (S/M/L).

The 7.1, 8.1 and 9.1 tabs correspond to root trunk shapes of **large pre-molars** and **small molars** (S/M/L).

The 10.1, 11.1 and 12.1 tabs correspond to root trunk shapes of **large molars** (S/M/L).

Inside Row

Cylindrical shaped tabs (12) that correspond in shape and dimensions with the cylindrical shaped wells of the VPI EP Mold, with a coding number that ranges from 1 to 12.

The 1, 2 and 3 tabs correspond to root trunk shapes of **anterior teeth** (S/M/L).

The 4, 5 and 6 tabs correspond to root trunk shapes of **premolars** (S/M/L).

The 7, 8 and 9 tabs correspond to root trunk shapes of **large pre-molars** and **small molars** (S/M/L).

The 10, 11 and 12 tabs correspond to root trunk shapes of **large molars** (S/M/L).

VPI Emergence Profile Indicator

Guide Pins

Implant Guide Pins can be used for evaluation of the correct position and angulation of the implant in relation to the desired emergence profile during implant osteotomy preparation.



Ciel 1.8Ø
Item No.
5213006650352



Green 2.6Ø
Item No.
5213006650369



Purple 3.2Ø
Item No.
5213006650376



Gold 4.6Ø
Item No.
5213006650383

VPI Emergence Profile Indicator

Retention Handles

The Indicator Retention Handles are used to hold and extend Indicator Tabs into the desired position in the mouth.

There are two available types of handles, each offering a different fixture component.

A threaded connection makes for a more secure connection of the tab onto the handle, once the correct size has been allocated to the patient and the VPI EP Indicator will be used for initiation of the implant osteotomy.

A magnetic connection allows ease of switching various sized tabs during the initial measuring phase.

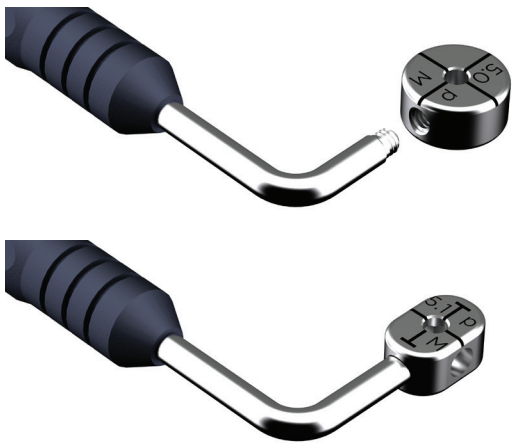
Cylindrical tabs are made to function with both connections, while anatomical tabs function only with the magnetic connection.



Threaded Connection
Item No.
5213006650482









Magnetic Connection
Item No.
5213006650499









VPI Emergence Profile Indicator

Tabs

Indicator Tabs correspond with shapes and dimensions of the root trunk of the natural dentition. They are used to measure and identify the correct size and shape emergence profile that will provide the foundation for the optimum final prosthesis design and fabrication.

					
Indicator Tab 1.0 Item No. 5213006650116	Indicator Tab 2.0 Item No. 5213006650130	Indicator Tab 3.0 Item No. 5213006650154	Indicator Tab 1.1 Item No. 5213006650123	Indicator Tab 2.1 Item No. 5213006650147	Indicator Tab 3.1 Item No. 5213006650161

					
Indicator Tab 4.0 Item No. 5213006650178	Indicator Tab 5.0 Item No. 5213006650192	Indicator Tab 6.0 Item No. 5213006650215	Indicator Tab 4.1 Item No. 5213006650185	Indicator Tab 5.1 Item No. 5213006650208	Indicator Tab 6.1 Item No. 5213006650222



					
Indicator Tab 7.0 Item No. 5213006650239	Indicator Tab 8.0 Item No. 5213006650253	Indicator Tab 9.0 Item No. 5213006650277	Indicator Tab 7.1 Item No. 5213006650246	Indicator Tab 8.1 Item No. 5213006650260	Indicator Tab 9.1 Item No. 5213006650284

					
Indicator Tab 10.0 Item No. 5213006650291	Indicator Tab 11.0 Item No. 5213006650314	Indicator Tab 12.0 Item No. 5213006650338	Indicator Tab 10.1 Item No. 5213006650307	Indicator Tab 11.1 Item No. 5213006650321	Indicator Tab 12.1 Item No. 5213006650345



VPI Emergence Profile Mold



The VPI EP Mold is an in-office tool used for the fabrication of custom shaped healing abutments and impression posts made out of composite material.

It can also be used for the duplication of a modified healing abutment or temporary prosthesis to a duplicate impression post. It features 27 wells that can be used for all of the above purposes.

The tools of the VPI EP Mold system are:

- VPI EP Mold:
 - v.04 - for implants with trilobe prosthetic connection
 - v.05 - for implants with CrossFit® prosthetic connection
 - v.06 - for implants with 45° internal hexagon prosthetic connection
- VPI EP Mold Silicone Insert 1.5mm
- VPI EP Mold Silicone Insert 2mm

Item No.
VPI EP Mold v.04 5213006650505
VPI EP Mold v.05 5213006650512
VPI EP Mold v.06 5213006650529

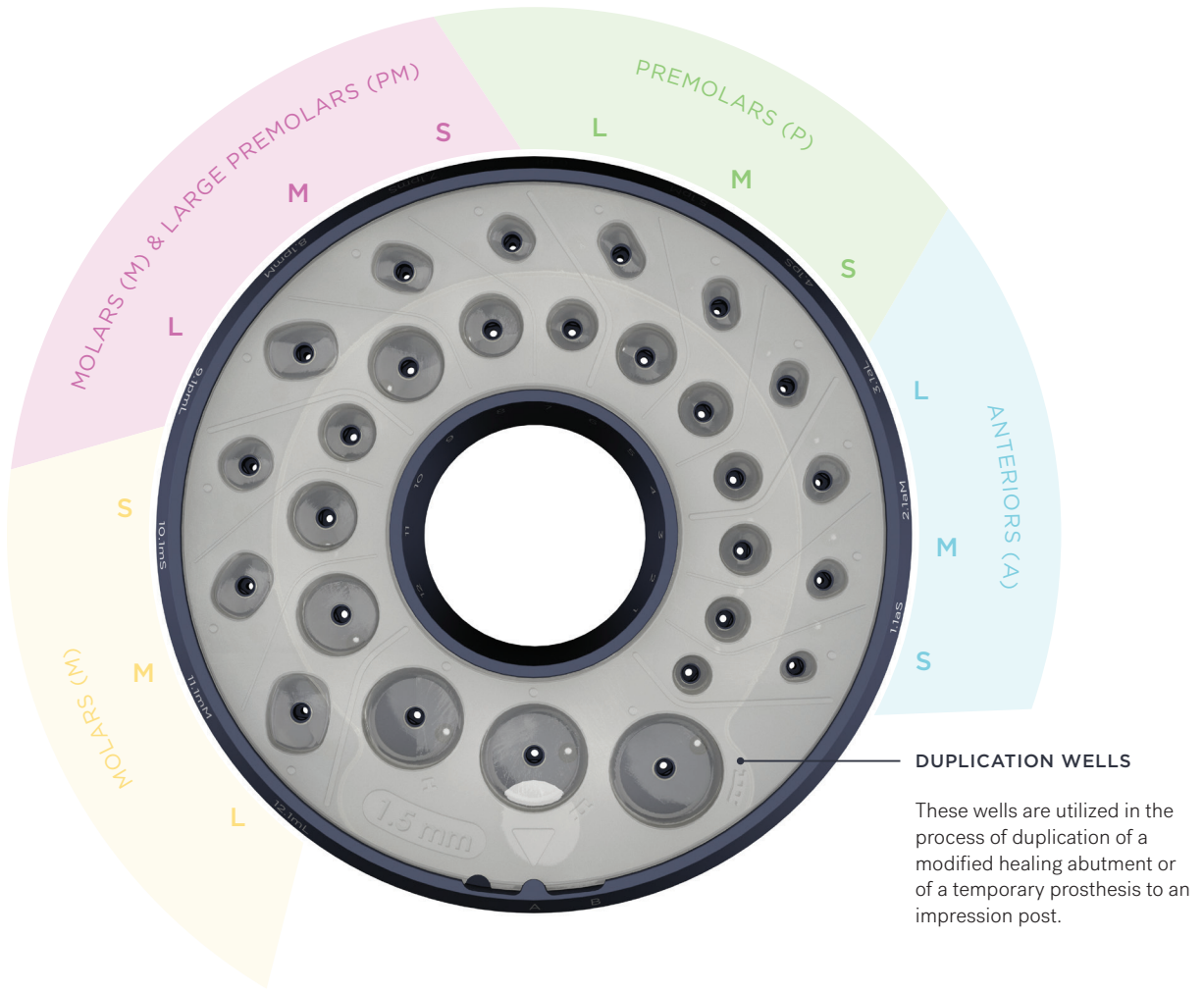
VPI Emergence Profile Mold

How it Works

Each well of the Mold has two types of coding, numbers and letters, that correlate with the coding of the VPI EP Indicator. This ensures precise communication between dentists and their assistants, and ease when correlating the shape and size of each well with the emergence profile shape and size to be generated in the mouth, as this has been depicted by the VPI EP Indicator.

The Silicone Insert of the VPI EP Mold has two functional positions: **Position A** functions with specific sized prosthetic connections. **Position B** functions with various sized prosthetic connections of the same type.

Both positions A & B allow the clinician to utilize the same wells of the mold with different size prosthetic connections, increasing the versatility of the system. e.g the same well in position A is functional with a 3.5 prosthetic platform and in position B with a 4.3 or 5 prosthetic platform abutment and impression post.



These wells are utilized in the process of duplication of a modified healing abutment or of a temporary prosthesis to an impression post.

Outside Row

Anatomical shaped wells (12) that correspond in shape and dimensions with the tabs of the VPI EP Indicator, with a coding number that ranges from 1.1 to 12.1.

The 1.1, 2.1 and 3.1 tabs correspond to root trunk shapes of **anterior teeth** (S/M/L).
The 4.1, 5.1 and 6.1 tabs correspond to root trunk shapes of **premolars** (S/M/L).

The 7.1, 8.1 and 9.1 tabs correspond to root trunk shapes of **large pre-molars** and **small molars** (S/M/L).
The 10.1, 11.1 and 12.1 tabs correspond to root trunk shapes of **large molars** (S/M/L).

Inside Row

Cylindrical shaped wells (12) that correspond in shape and dimensions with the tabs of the VPI EP Indicator, with a coding number that ranges from from 1 to 12.

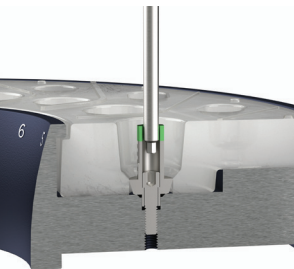
The 1, 2 and 3 tabs correspond to root trunk shapes of **anterior teeth** (S/M/L).
The 4, 5 and 6 tabs correspond to root trunk shapes of **premolars** (S/M/L).

The 7, 8 and 9 tabs correspond to root trunk shapes of **large pre-molars** and **small molars** (S/M/L).
The 10, 11 and 12 tabs correspond to root trunk shapes of **large molars** (S/M/L).

VPI Emergence Profile Mold: How it Works

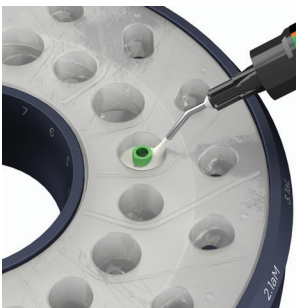
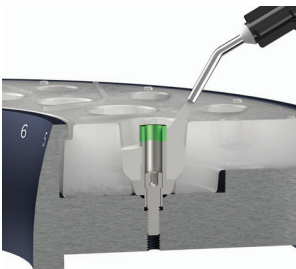
The VPI EP Mold is an in-office tool used for the fabrication of custom healing abutments and impression posts aiming to the generation and accurate recording of a natural emergence profile.

Step 1



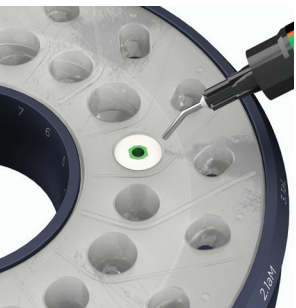
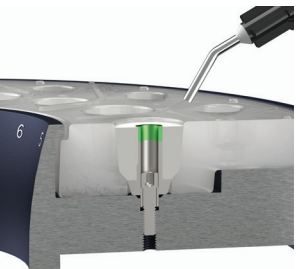
Couple thread the Ti core abutment into the desired well, using hand torque only.

Step 2

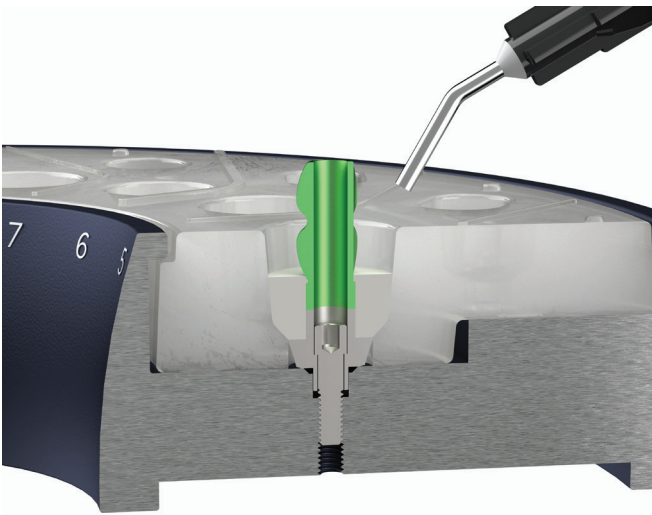


Fill in the open space with VPI composite material and light cure for 40 sec.

Step 3



Unthread and remove the custom healing abutment from the mold and light cure for additional 20 sec. Following, clean the well of the mold with a cotton tip soaked in alcohol.



Follow the same steps 1,2,3 utilizing an impression post for fabricating the custom duplicate impression post.



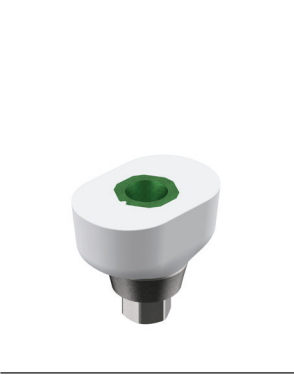
VPI Emergence Profile Mold: Duplication Process



The VPI Mold can be utilized for the duplication of the sub-gingival portion of a modified healing abutment or a temporary prosthesis to a duplicate impression post.

Three duplication wells, compatible with different prosthetic platform sizes, can be utilized for this purpose.

Modified Abutment



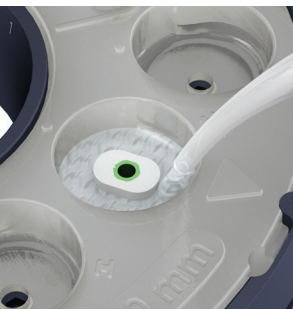
If modification of the sub-gingival portion of the custom healing abutment has been initiated, the duplication process must be used.

Step 1



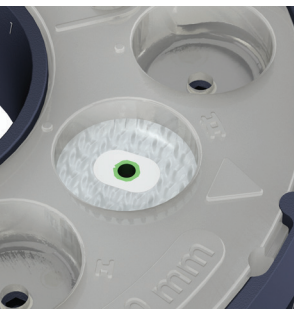
Choose the desired duplication well, coat with vaseline and couple thread the modified healing abutment or temporary prosthesis.

Step 2



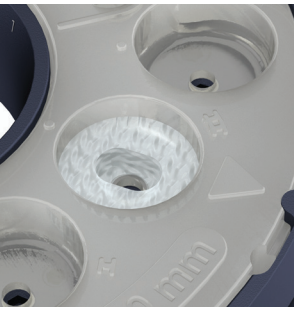
Fill the open space with only clear silicone material.

Step 3



Let the silicone set for approximately 3-6 minutes according to manufacturer guidelines.

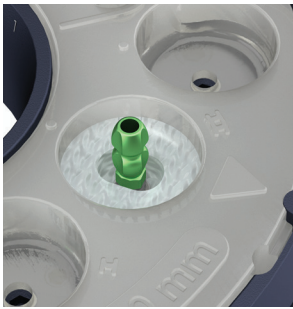
Step 4



Remove the modified healing abutment, or temporary prosthesis from the mold.

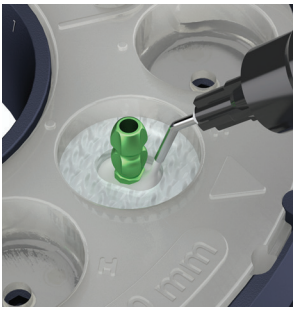
Attention! Once the duplication process is complete, remove the silicone from the well immediately.

Step 5



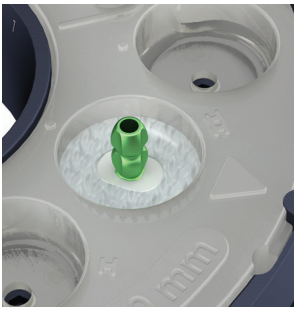
Couple thread the core impression post.

Step 6



Fill the open space available with the VPI composite material.

Step 7

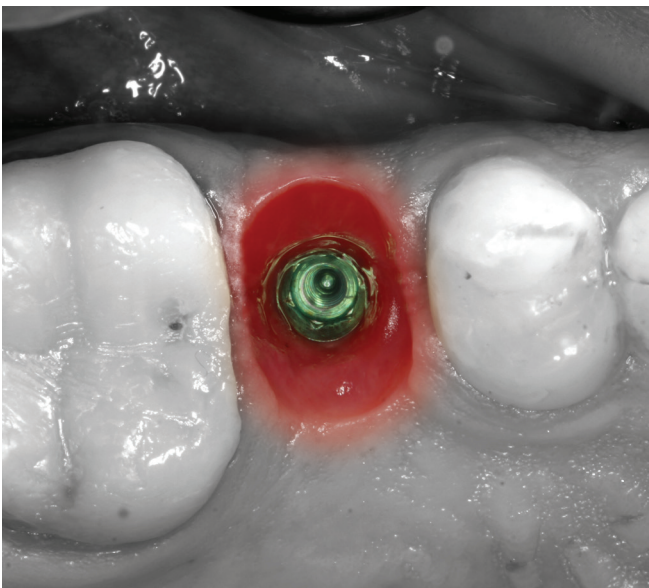


Light cure the VPI composite material for 40 sec. Then, remove the customized impression post from the mold and light cure for additional 20 sec.

Modified Impression Post



The generated custom impression post is an exact duplicate of the modified healing abutment at least at its sub-gingival portion.



VPI Emergence Profile Mold



v.04

The VPI EP Mold v.04 is designed to be functional with implants with Tri-lobe prosthetic connection. e.g. Nobel Biocare Replace®



VPI Emergence Profile Mold v.04
Item No.
5213006650529

COMPATIBILITY CHART: NOBEL REPLACE®

	a	p	pm	m	I	II	III
POS. A	NP 3.5	NP 3.5	NP 3.5	NP 3.5	NP 3.5	NP 3.5	NP 3.5
POS. B	RP/WP 4.3/5	RP/WP 4.3/5	RP/WP 4.3/5	RP/WP 4.3/5	RP/WP 4.3/5	RP/WP 4.3/5	RP/WP 4.3/5

POS.A and POS.B refer to silicone insert position within the mold.



3.5 Ti Abutment
Core
Item No.
5213006650444



4.3 Ti Abutment
Core
Item No.
5213006650451



5.0 Ti Abutment
Core
Item No.
5213006650468

Abutment
Pillar Height 7mm Shoulder Height 2mm



3.5 Closed Ti
Impression Post
Item No.
5213006650031



4.3 Closed Ti
Impression Post
Item No.
5213006650048



5.0 Closed Ti
Impression Post
Item No.
5213006650055

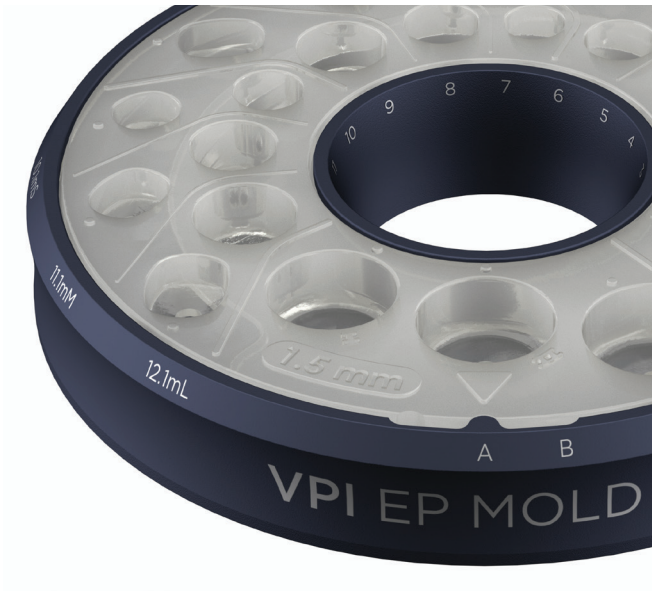
Impression Post
Pillar Height 12mm Shoulder Height 2mm

VPI Emergence Profile Mold



v.05

The VPI EP Mold v.05 is designed to be functional with CrossFit® prosthetic connection. e.g. Straumann Bone Level®







VPI Emergence Profile Mold v.05
Item No.
5213006650529

COMPATIBILITY CHART: STRAUMANN BONE LEVEL®

	a	p	pm	m	I	II	III
POS. A	NC 3.3	NC 3.3	NC 3.3	NC 3.3	NC 3.3	NC 3.3	NC 3.3
POS. B	RC 4.1/4.8	RC 4.1/4.8	RC 4.1/4.8	RC 4.1/4.8	RC 4.1/4.8	RC 4.1/4.8	RC 4.1/4.8

POS.A and POS.B refer to silicone insert position within the mold.

			
3.3 Ti Abutment Core Item No. 5213006650062	4.1/4.8 Ti Abutment Core Item No. 5213006650079	3.3 Closed Ti Impression Post Item No. 5213006650093	4.1/4.8 Closed Ti Impression Post Item No. 5213006650109
Abutment Pillar Height 7mm Shoulder Height 2mm		Impression Post Pillar Height 12mm Shoulder Height 2mm	

VPI Emergence Profile Mold



v.06

The VPI EP Mold v.06 is designed to be functional with 45’ internal hexagon prosthetic connection. e.g. MIS Seven®, ZimmerBiomet Screw-Vent®, Implant Direct Legacy®



VPI Emergence Profile Mold v.06
Item No.
5213006650529

COMPATIBILITY CHARTS

	a	p	pm	m	I	II	III
MIS SEVEN®							
POS. A	NP/SP/WP 3.3/3.75, 4.2/5.6	NP/SP/WP 3.3/3.75, 4.2/5.6	NP/SP/WP 3.3/3.75, 4.2/5.6	NP/SP/WP 3.3/3.75, 4.2/5.6	NP/SP/WP 3.3/3.75, 4.2/5.6	NP/SP/WP 3.3/3.75, 4.2/5.6	NP/SP/WP 3.3/3.75, 4.2/5.6
POS. B	-	-	-	-	-	-	-
ZIMMERBIOMET SCREW-VENT®							
POS. A	3.5/4.5	3.5/4.5	3.5/4.5	3.5/4.5	3.5/4.5	3.5/4.5	3.5/4.5
POS. B	-	-	5.7	5.7	-	5.7	5.7
IMPLANT DIRECT LEGACY®							
POS. A	3.5/4.5	3.5/4.5	3.5/4.5	3.5/4.5	3.5/4.5	3.5/4.5	3.5/4.5
POS. B	3.0	3.0	5.7	5.7	3.0	5.7	5.7

POS.A and POS.B refer to silicone insert position within the mold.

				Abutment Pillar Height 7mm Shoulder Height 2mm *3.3 is compatible with the MIS Seven® implant
3.3 Ti Abutment Core * Item No. 5213006650536	3.5 Ti Abutment Core Item No. 5213006650543	4.5 Ti Abutment Core Item No. 5213006650550	5.7 Ti Abutment Core Item No. 5213006650567	
				Impression Post Pillar Height 12mm Shoulder Height 2mm *3.3 is compatible with the MIS Seven® implant
3.3 Closed Ti Impression Post * Item No. 5213006650574	3.5 Closed Ti Impression Post Item No. 5213006650581	4.5 Closed Ti Impression Post Item No. 5213006650598	5.7 Closed Ti Impression Post Item No. 5213006650604	

VPI Emergence Profile Mold

Silicone Inserts

Two silicone inserts allow you to produce custom healing abutments and duplicate impression posts with a titanium shoulder of 1.5mm & 2.0mm height. Both sizes available for all Mold versions.

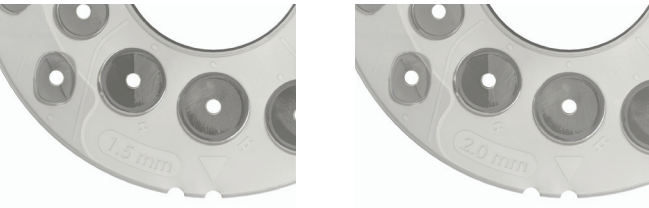
Silicone Insert Changing Process

Locate the open bore at the base of the mold and push the silicone out with the bottom portion

of the handle of the EP Indicator or other suitable instrument in order to change the silicone insert.

Silicone Insert 1.5mm
Item No.
5213006650611

Silicone Insert 2.0 mm
Item No.
5213006650628



VPI Emergence Profile Mold

Easy Grip Handle

This handle is used for easy and secure polishing of the composite material on the VPI Abutments & Impression Posts.



VPI Easy Grip Polishing Handle
v.04 Item No. 5213006650413
v.05 Item No. 5213006650420
v.06 Item No. 5213006650437

VPI Easy Grip Handle v.04: one side of the handle holds 3.5 Abutments and Impression Posts. The opposite side holds the remaining sizes (4.3, 5).

VPI Easy Grip Handle v.05: one side of the handle holds 3.3 Abutments and Impression Posts. The opposite side holds the remaining sizes (4.1, 4.8).

VPI Easy Grip Handle v.06: one side of the handle holds 3.2 Abutments and Impression Posts

compatible with Implant Direct®. The opposite side holds the remaining sizes (3.3 - 6) of the rest of the compatible implant systems.

Abutments & impression posts should be tightened onto the handle by hand torque only.



VPI Emergence Profile



VPI Nano Easy Flow
Item No.
5213006650642

Composite material with outstanding properties; flowability, high polish, radiopaque, scannable without the use of scanning powder mediums, ideal for the VPI system.



Composite Polishing Paste
Item No.
5213006650635

The Diamond Paste is utilized for proper polishing of the composite surface of the VPI Abutments and Impression Posts.

Additional Tools

Our tools are tailor made for the VPI EP System, allowing you to execute the ultimate polished prosthesis.



Bristle Brush
Item No.
5213006650390

Polishing brushes are used to refine and perfect the composite surface.

The process should always begin with the Bristle Brush and end with the Polishing Mop, utilizing the diamond paste at all stages for ultimate results.



Polishing Mop
Item No.
5213006650406

Several components of the VPI EMPS are patented and patent pending products. VPI EPMS, VPI EP Mold, VPI EP Indicator and Innovato Holdings are registered trademarks of Innovato Holdings. All other Trademarks mentioned within this catalog are the property of their respective Owners and neither the Owners nor the trademarks are in no way associated to Innovato Holdings.

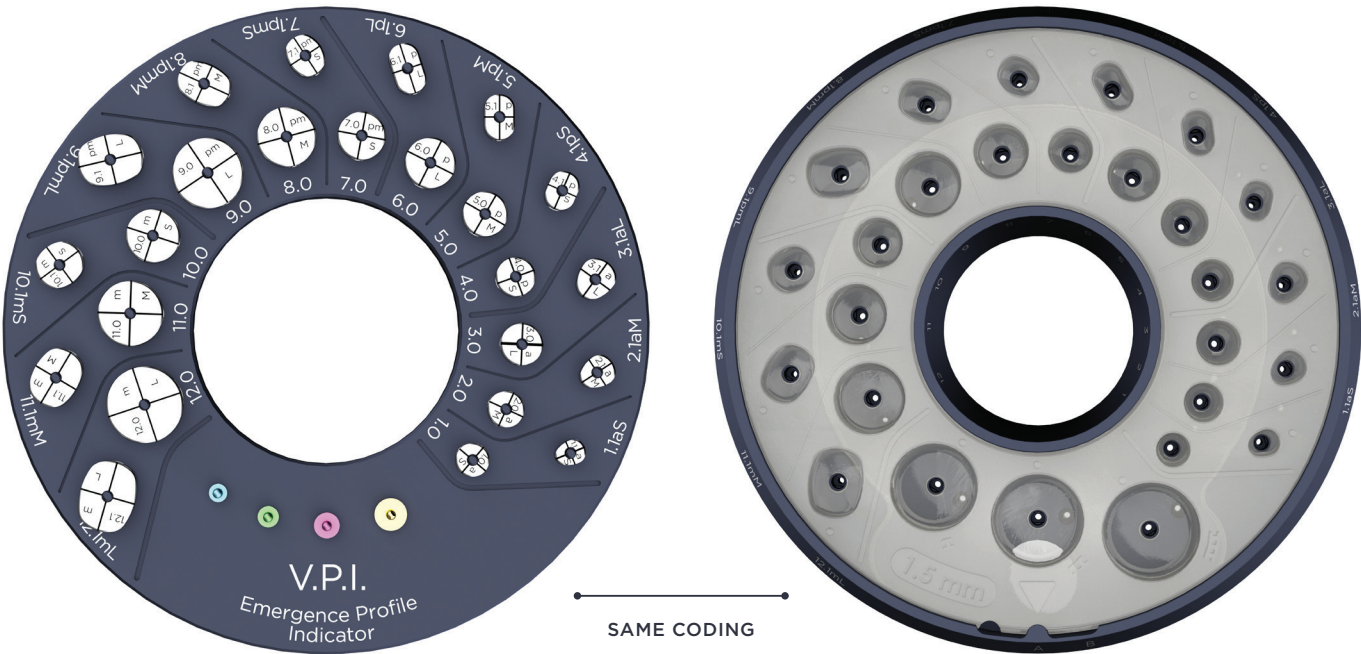
VPI EP Management System Correlation	40
Case Studies	42

VPI Emergence Profile Management System

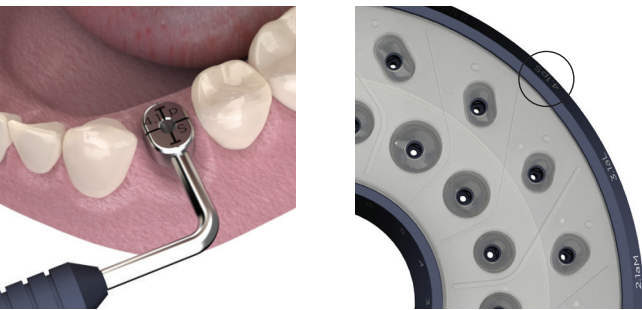


Correlation

The VPI EP Indicator has 24 tabs. Each tab is identical in shape and size with the 24 corresponding, coded wells of the VPI Mold.

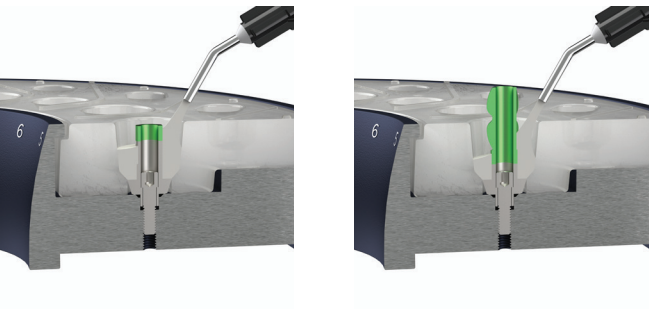


Step 1



Select the proper code of abutment and impression post to be used for your clinical case intra-orally or extra-orally, and correlate the code of the tab of the indicator with the code of the well of the mold.

Step 2



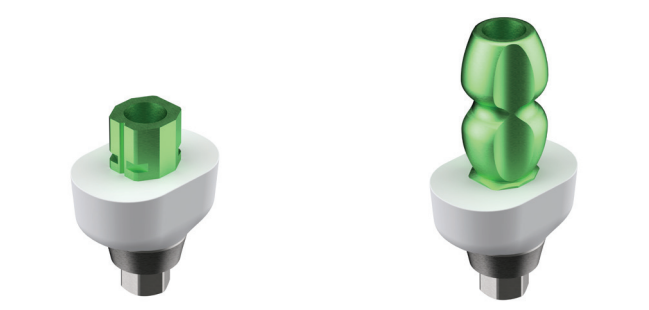
Have your assistant fabricate the desired custom shaped healing abutment and duplicate impression post for clinical use.

Step 3



After the VPI abutment has been generated; Connect the VPI abutment on the easy grip polishing handle. Make any necessary height adjustments. Polish and disinfect the composite surface. Save the fabricated VPI components for clinical use.

Step 4



Fabricated custom healing abutment and impression post with the same shape and dimensions custom body as the one depicted by the tab of the indicator.

VPI Emergence Profile Management System

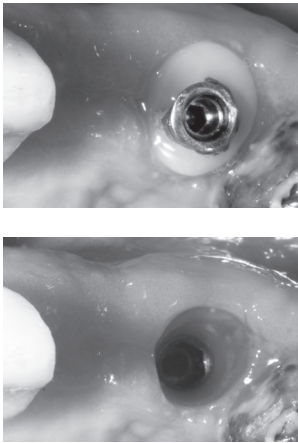
Case Studies

The VPI EPMS has been developed and clinically tested over the last three years, consistently proving it's safety, precision and efficiency.

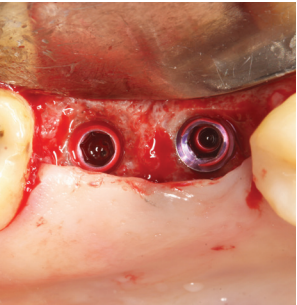
Follow the recommended protocols of clinical use for optimum results. These protocols have been tested and proven to be the most efficient.

The speed in which the clinician is able to fabricate a customised healing abutment in any intra oral situation is phenomenal and the outstanding results make the aesthetics for the final prosthesis seem so simple.

VPI EPMS can also be used for fabrication of two piece healing abutments and impression posts. A VPI custom abutment can be modified to a temporary abutment in order to support a temporary prosthesis, fabricated analogically or digitally. Innovato Holdings offer extensive training on how to utilize the VPI EPMS in order to take full advantage of all the possibilities and capabilities the system can offer!



Case Study 1



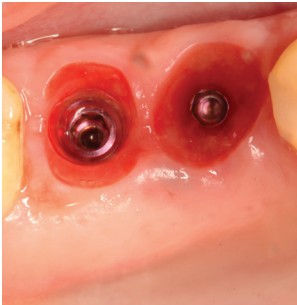
Implants uncovered



VPI healing abutments in place according to the prosthetic plan



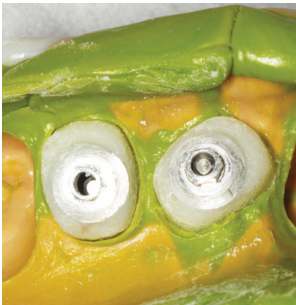
2 weeks post uncover surgery



Emergence profile generated



Impression with VPI impression posts



VPI impression posts ensure a secure positioning into the impression



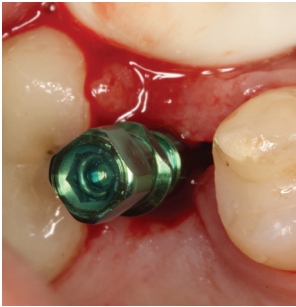
Emergence profile recorded accurately

VPI Emergence Profile Management System: Case Studies

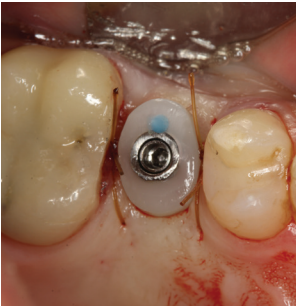
Case Study 2



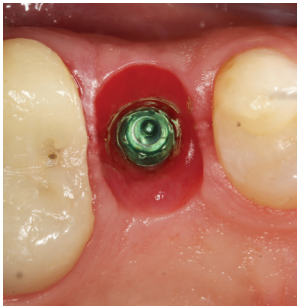
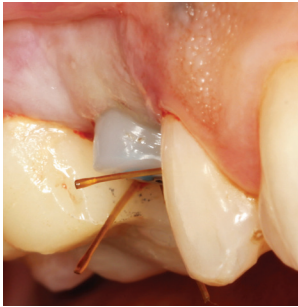
Edentulous space evaluated with VPI EP Indicator (#5.1)



VPI Healing abutment (#5.1) in place



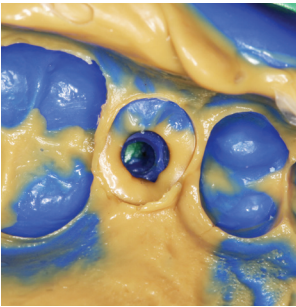
VPI healing abutment directs tissue proper facial profile



2 weeks post uncover, generated emergence profile



VPI Impression post (#5.1) in place



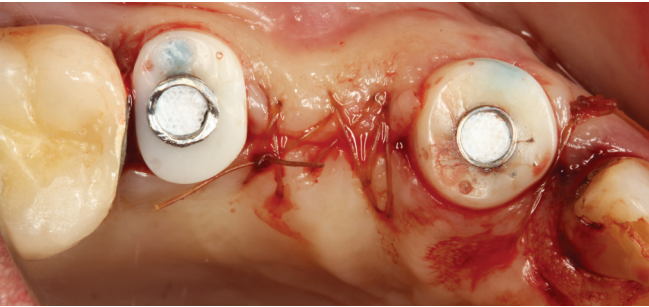
Impression



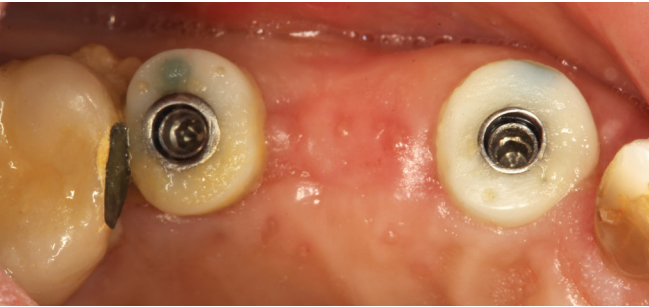
Final restoration with no black triangles and undercut areas. Proper emergence profile as generated and recorded with the VPI EPMS

The VPI EPMS is a system that can be used for both anterior and posterior implant cases in a time and cost effective manner.

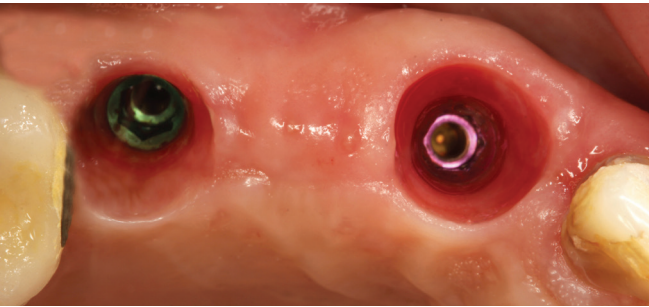
Case Study 3



VPI Healing abutments in place at uncover surgery



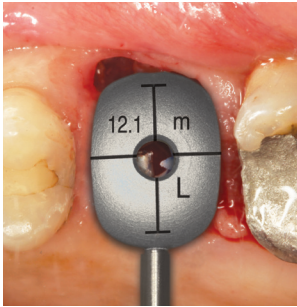
16 days post uncover procedure a natural in shape and size emergence profile has been generated



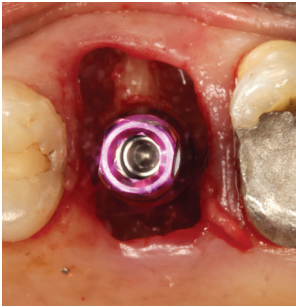
Optimum shape and size emergence profile allow for enhanced aesthetics

VPI Emergence Profile Management System: Case Studies

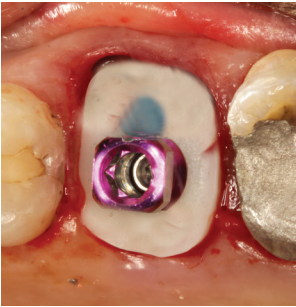
Case Study 4



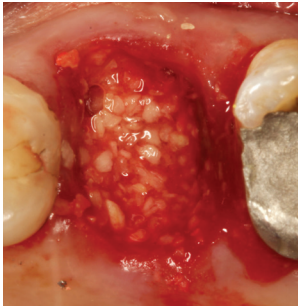
Edentulous space evaluated with VPI EP Indicator (#12.1)



Place the implant with flat surface of the hex in the same direction (facially) as the T lines of the tab



VPI healing abutment (#12.1) is coupled with the implant for evaluation



Two stage procedure was decided and the site was grafted and left to heal.



VPI healing abutment (#12.1) received further customisation to replicate the natural emergence profile



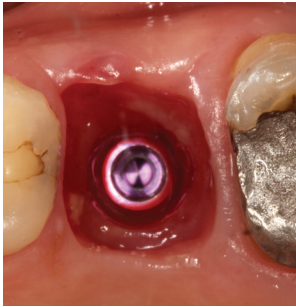
3 months post implant placement, the site is ready for uncovering



VPI healing abutment (#12.1) is coupled with the implant



Two weeks post uncovering procedure



A natural emergence profile has been generated



Temporary restoration with no black triangles and undercut areas. Proper emergence profile as generated and recorded with the VPI EPMS provided the foundation for the ideal restoration.





INNOVATO HOLDINGS

MASTERING THE EMERGENCE PROFILE

✉ info@innovatoholdings.com

www.innovatoholdings.com